

# UR-W547C

**UR-W547C provides maximum hook height of 18.2m with its seven section hydraulic boom.**

Its compact 7 section long hydraulic boom provides the wide working radius of 17.83m and fantastic hook height of 18.2m. The long and yet compact boom gains a huge variety of lifting situation.

**5020kg**  
Mass of crane

**Max 18.2m**  
Hook height (Approx.)  
(Above ground level)

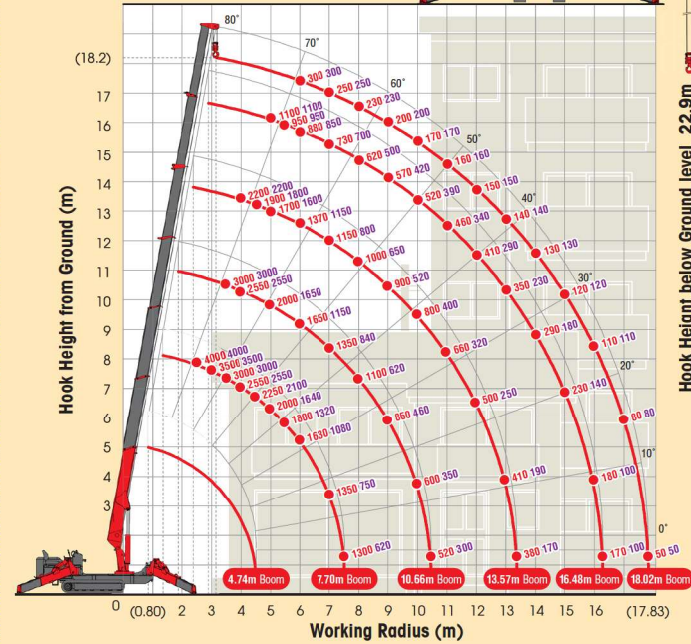
**Max 4.05t  
×2.5m**  
Lifting capacity

**Max 17.83m**  
Working radius

Radio remote control

## WORKING RANGE & NET RATED LOADS (kg)

Outrigger ● Max-extended NOT max-extended



Automatic stop for overloading (KM-100)



Three colored lamp



Searcher hook assembly (Options)



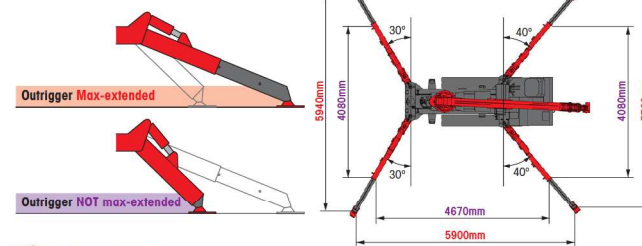
NOTE: Automatic stop for overloading is not available in combination with this Searcher hook assembly. For more information, contact your local UNIC distributor.

Length	800mm
Lifting capacity	Max. 500kg
Tilt angles	0°, 20°, 40°, 60°

## SPECIFICATIONS

Crane model	UR-W547C2
Lifting capacity	Max. 4.05t at 2.5m
Working radius	Min. 0.80m, Max. 17.83m
Hook height (Approx.)	Above ground level: Max. 18.2m Below ground level: Max. 22.9m with 4-part line
Length	Min. 3.99m to Max. 18.02m
Extending speed	14.03m / 35.0 sec. [50Hz] 14.03m / 61.0 sec. [60Hz] 14.03m / 51.0 sec.
Raising angle / speed	0° to 80° / 18.0 sec. [50Hz] 0° to 80° / 30.0 sec. [60Hz] 0° to 80° / 25.0 sec.
Structure	7-section box beam type telescoping boom
Single line speed	50.0 m/min (at 5th layer) [50Hz] 30.0 m/min (at 5th layer) [60Hz] 36.0 m/min (at 5th layer)
Hook speed	14.0 m/min (at 5th layer with 4-part line) [50Hz] 7.5 m/min (at 5th layer with 4-part line) [60Hz] 9.0 m/min (at 5th layer with 4-part line)
Structure	Hydraulic motor driven, spur gear reduction, with automatic mechanical brake and wire rope retaining roller
Wire rope	Construction: IWRC L6 x P-W52(26) / Diameter x Length: 8mm x 103.0m / Breaking strength: 53.0kN (5400 kgf)
Hook block	4.00t capacity, 2 sheaves with safety latch
Range	360° continuous rotation on a ball bearing race
Speed	2.5 rpm [50Hz] 2.0 rpm [60Hz] 2.3 rpm
Structure	Hydraulic motor driven, worm gear reduction, and worm self-locking brake (supported by ball bearings)
Horizontal, Vertical	A double acting hydraulic cylinder, direct pushing type (Directly connected with hydraulic automatic lock device)
Type	Variable delivery piston pump
Rated pressure	21.6 MPa (220 kgf/cm <sup>2</sup> )
Rated delivery	60 l/min
Rated revolution	2500 rpm
Hydraulic oil tank capacity	75 liters
Safety devices	Pressure relief valve for hydraulic circuit / Counterbalance valves for boom raising and boom telescoping cylinders / Pilot-operated check valves for outrigger cylinders (Horizontal) Double pilot-operated check valves for outrigger cylinders (Vertical) / Boom angle indicator with load indicator / Hook safety latch / Automatic mechanical brake for winch Automatic stop for overwinding / Overwinding alarm / Automatic stop for leaving minimum wire rope / Emergency stop button / Inter-lock device of crane and crawling levers Inter-lock device of crane and outriggers / Level / Automatic stop for overloading (KM-100) / Digital load meter / Three colored lamp / Headlight / Boom outrigger monitor lamp

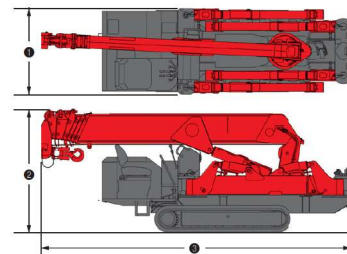
## OUTRIGGER POSITIONS



## CRAWLING GEAR

Crane model	UR-W547C2
Crawling speed	0-3.0 km/h, forward / backward [50Hz] 0-1.3 km/h [60Hz] 0-1.5 km/h
Hill climbing ability	23°
Tread length	1750mm
Ground contact pressure	47.0 kPa (0.48 kgf/cm <sup>2</sup> ) [with electric power unit] 48.1 kPa (0.49 kgf/cm <sup>2</sup> )
Engine manufacturer / model	Yanmar / 3TNV76
Displacement	1115cc
Maximum output	15.17kW(20.6PS) / 2500 rpm, Rated output
Fuel	Diesel
Fuel tank capacity	40 liters
Steering	Hydraulic drive independent of left / right
Starter	Starter motor

## DIMENSIONS



Crane model	UR-W547C2
Total width	1380mm
Total height	1980mm
Total length	4950mm
Mass of crane	5020kg (5170kg) [with electric power unit]

## Electric power unit specifications

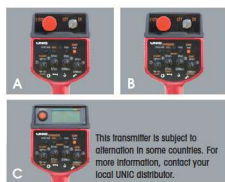
Rated power	7.5kW (3-phase 4 poles)
Voltage	AC 200V or 400V (50Hz / 60Hz) 3 phase 4P

\*Not included any cables.



# Standard equipments and Options

# UNIC MINI-CRAWLER CRANE



**1** Radio remote control  
A W094C, W295C  
B W376C, W546C, W547C, W706C  
C W1006C



**2** Cable remote control



**3** Load meter



**4** Digital load meter  
Load indication is each 20kg (0.02t).



**5** Automatic stop for overloading  
KM-100 W376C, W546C, W547C



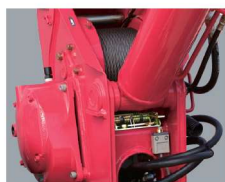
**6** Automatic stop for overloading  
ML-300 W706C



**7** Safe load indicator



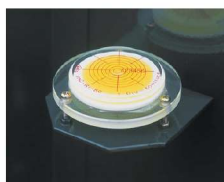
**8** Automatic stop for overwinding



**9** Automatic stop for leaving minimum wire rope



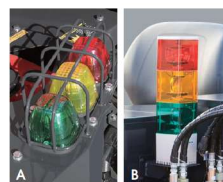
**10** Emergency stop button  
A W094C, W295C  
B W376C, W546C, W547C, W706C, W1006C



**11** Level



**12** Turn over prevention device



**13** Three colored lamp  
A W295C  
B W376C, W546C, W547C, W706C, W1006C



**14** Boom outrigger monitor lamp



**15** Searcher hook assembly



**16** Fly jib assembly



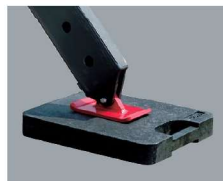
**17** Single line hook



**18** Working light



**19** Headlight



**20** Outrigger mats



**21** Black crawler belt



**22** White crawler belt



**23** White crawler belt (as spare)



**24** Rubber Pad

**25** 20M cable for motor (200V)

**26** 20M cable for motor (400V)

STANDARD EQUIPMENTS / OPTION [★Standard ●Option — Not available]

Crane model		UR-W094C		UR-W295C		UR-W295C1		UR-W376C2		UR-W546C2		UR-W547C2		UR-W706C2		UR-W1006C2		Crane model														
		UR-W094CP2E		UR-W295CP2A		UR-W295CP2AM		UR-W295C1A		UR-W295C1AM		UR-W376C2A		UR-W376C2AM		UR-W546C2A			UR-W546C2AM		UR-W547C2A		UR-W547C2AM		UR-W706C2A		UR-W706C2AM		UR-W1006C2A		UR-W1006C2AM	
Engine manufacturer / model		Mitsubishi / GB300LE		Mitsubishi / GB400LE		Mitsubishi / GB400LE		Kubota / Z482-E3B		Kubota / Z482-E3B		Yanmar / 3TNV76		Yanmar / 3TNV76		Yanmar / 3TNV76		Yanmar / 3TNV76		Yanmar / 3TNV76		Yanmar / 3TNV76		Mitsubishi / S4L2		Mitsubishi / S4L2		Yanmar / 4TNV88		Yanmar / 4TNV88		Engine manufacturer / model
Fuel		Petrol		Petrol		Petrol		Diesel		Diesel		Diesel		Diesel		Diesel		Diesel		Diesel		Diesel		Diesel		Diesel		Diesel		Diesel		Fuel
Electric motor		—		—		AC 200V or 400V		—		AC 200V or 400V		—		AC 200V or 400V		—		AC 200V or 400V		—		AC 200V or 400V		—		AC 200V or 400V		—		AC 400/400-440V		Electric motor
1	Radio remote control	★	★	★	★	★	★	★	★	★	★	★	★	★	★	★	★	★	★	★	★	★	★	★	★	★	★	★	★	★	Radio remote control	
2	Cable remote control	●	●	●	●	●	●	●	●	●	●	●	●	●	●	●	●	●	●	●	●	●	●	●	●	●	●	●	●	●	Cable remote control	
3	Load meter	★	★	★	★	★	★	★	★	★	★	★	★	★	★	★	★	★	★	★	★	★	★	★	★	★	★	★	★	★	Load meter	
4	Digital load meter	—	—	●	●	●	●	●	●	●	●	●	●	●	●	●	●	●	●	●	●	●	●	●	●	●	●	●	●	●	Digital load meter	
5	Automatic stop for overloading (KM-100)	—	—	●	●	●	●	●	●	●	●	●	●	●	●	●	●	●	●	●	●	●	●	●	●	●	●	●	●	●	Automatic stop for overloading (KM-100)	
6	Automatic stop for overloading (ML-300)	—	—	—	—	—	—	—	—	—	—	—	—	—	—	—	—	—	—	—	—	—	—	—	—	—	—	—	—	—	Automatic stop for overloading (ML-300)	
7	Safe load indicator	—	—	—	—	—	—	—	—	—	—	—	—	—	—	—	—	—	—	—	—	—	—	—	—	—	—	—	—	—	Safe load indicator	
8	Automatic stop for overwinding	★	★	★	★	★	★	★	★	★	★	★	★	★	★	★	★	★	★	★	★	★	★	★	★	★	★	★	★	★	Automatic stop for overwinding	
9	Automatic stop for leaving minimum wire rope	★	★	★	★	★	★	★	★	★	★	★	★	★	★	★	★	★	★	★	★	★	★	★	★	★	★	★	★	★	Automatic stop for leaving minimum wire rope	
10	Emergency stop button	★	★	★	★	★	★	★	★	★	★	★	★	★	★	★	★	★	★	★	★	★	★	★	★	★	★	★	★	★	Emergency stop button	
11	Level	★	★	★	★	★	★	★	★	★	★	★	★	★	★	★	★	★	★	★	★	★	★	★	★	★	★	★	★	★	Level	
12	Turn over prevention device	—	—	★	★	★	★	★	★	★	★	★	★	★	★	★	★	★	★	★	★	★	★	★	★	★	★	★	★	★	Turn over prevention device	
13	Three colored lamp	—	—	●	●	●	●	●	●	●	●	●	●	●	●	●	●	●	●	●	●	●	●	●	●	●	●	●	●	●	Three colored lamp	
14	Boom outrigger monitor lamp	—	—	—	—	—	—	—	—	—	—	—	—	—	—	—	—	—	—	—	—	—	—	—	—	—	—	—	—	—	Boom outrigger monitor lamp	
15	Searcher hook assembly	—	—	●	●	●	●	●	●	●	●	●	●	●	●	●	●	●	●	●	●	●	●	●	●	●	●	●	●	●	Searcher hook assembly	
16	Fly jib assembly	—	—	●	●	●	●	●	●	●	●	●	●	●	●	●	●	●	●	●	●	●	●	●	●	●	●	●	●	●	Fly jib assembly	
17	Single line hook	—	—	●	●	●	●	●	●	●	●	●	●	●	●	●	●	●	●	●	●	●	●	●	●	●	●	●	●	●	Single line hook	
18	Working light	●	●	●	●	●	●	●	●	●	●	●	●	●	●	●	●	●	●	●	●	●	●	●	●	●	●	●	●	●	Working light	
19	Headlight	—	—	—	—	—	—	—	—	—	—	—	—	—	—	—	—	—	—	—	—	—	—	—	—	—	—	—	—	—	Headlight	
20	Outrigger mats	●	●	●	●	●	●	●	●	●	●	●	●	●	●	●	●	●	●	●	●	●	●	●	●	●	●	●	●	●	Outrigger mats	
21	Black crawler belt	★	★	★	★	★	★	★	★	★	★	★	★	★	★	★	★	★	★	★	★	★	★	★	★	★	★	★	★	★	Black crawler belt	
22	White crawler belt	●	●	●	●	●	●	●	●	●	●	●	●	●	●	●	●	●	●	●	●	●	●	●	●	●	●	●	●	●	White crawler belt	
23	White crawler belt (as spare)	●	●	●	●	●	●	●	●	●	●	●	●	●	●	●	●	●	●	●	●	●	●	●	●	●	●	●	●	●	White crawler belt (as spare)	
24	Rubber Pad	—	—	—	—	—	—	—	—	—	—	—	—	—	—	—	—	—	—	—	—	—	—	—	—	—	—	—	—	—	Rubber Pad	
25	20M cable for motor (200V)	—	—	—	—	—	—	—	—	—	—	—	—	—	—	—	—	—	—	—	—	—	—	—	—	—	—	—	—	—	20M cable for motor (200V)	
26	20M cable for motor (400V)	—	—	—	—	—	—	—	—	—	—	—	—	—	—	—	—	—	—	—	—	—	—	—	—	—	—	—	—	—	20M cable for motor (400V)	